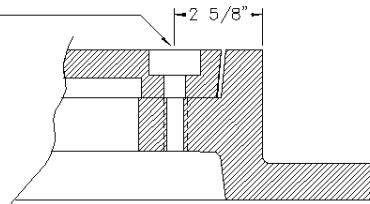


DRILL 11/16", FOR 5/8" S S  
BOLT C BORE 1 1/2" x 3/4" DP



BOSS DETAIL

NOTES:

## OLYMPIC FOUNDRY INC.

36" X 4" REVERSIBLE LOCKING MANHOLE RING & COVER

MATL: Frame; Cast Iron ASTM A48 CL30. Cover; Ductile Iron ASTM A536 CL80-55-06

RATING: H-20

PART NO. MH79 D/T

APPROX WT: Ring 285 Lbs, Cover 290 Lbs

REV: A DATE: 7/2/2003 New border

REV  
A

DOCUMENT APPROVED  
BY: DATE:

DWN: CL DATE: 7/2/2003

TOLERANCE  
XX +.1  
XXX +.06  
XXXX +.030  
< + 2 DEG

REV: DATE:

DWG #: MH79 DT

SCALE: N/A

SHEET: 1 OF 1