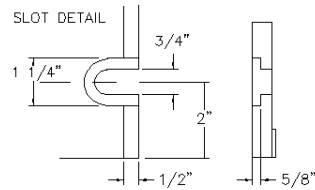
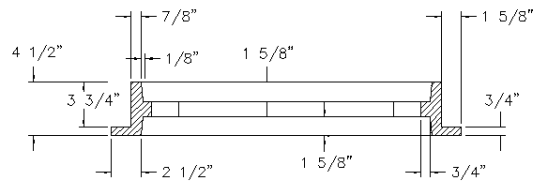


FRAME

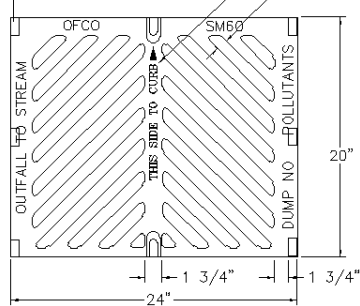


PAD 1 1/2" X 3/4" X 1/8" THICK (8 REQ.)

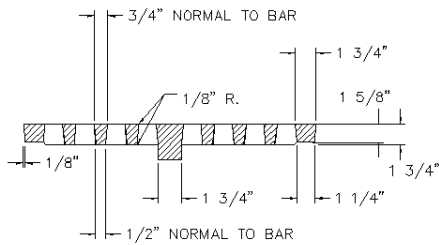
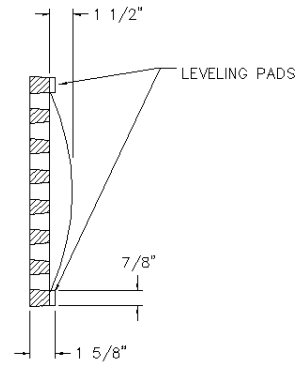
EMBOSSED ON GRATE

1" OPENING TYP.

SLOT FORMED AND RECESSED FOR 5/8" - 11 NC X 2" S.S. SOCKET HEAD (ALLEN HEAD) CAP SCREW.



GRATE



NOTES:  
WSDOT STD. B2A, APWA #49

# OLYMPIC FOUNDRY INC.

20" X 24" REVERSIBLE LOCKING FRAME & GRATE

MATL: Frame; Cast Iron ASTM A48 CL30, Grate; Ductile Iron ASTM A536 CL 80-55-06

RATING: H-20

PART NO. SM60 D/T

APPROX WT: Frame 160 Lbs, Grate 110 Lbs

REV: A DATE: 6/23/2003 New border

REV  
A

DOCUMENT APPROVED  
BY: DATE:

DWN: CL DATE: 6/23/2003

CHKD: CL DATE: 6/23/2003

TOLERANCE  
XX +.1  
XXX +.06  
XXXX +.030  
<+-2 DEG

REV: DATE:

DWG #: SM60 DIAG DT

SCALE: N/A

SHEET: 1 OF 1