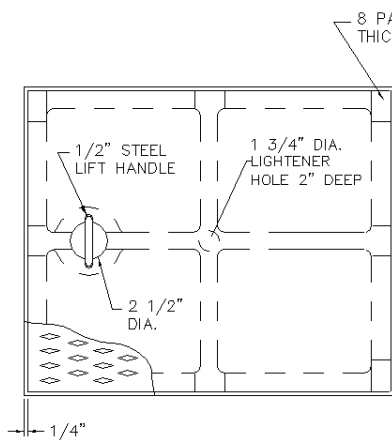
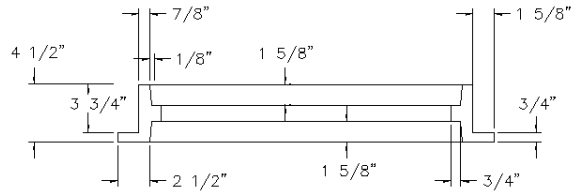
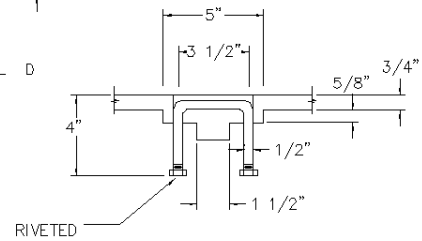
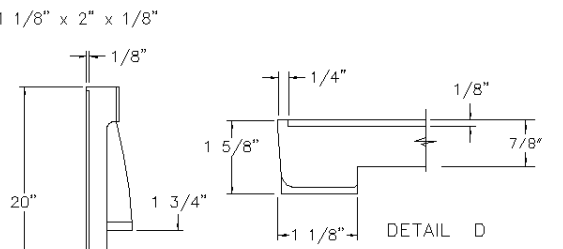


FRAME



GRATE



NOTES:
WSDOT STD PLAN B2

OLYMPIC FOUNDRY INC.

20" X 24" REVERSIBLE FRAME & SOLID COVER

MATL: Frame; Cast Iron ASTM A48 CL30, Cover: Ductile Iron ASTM A536 CL 80-55-06

RATING: H-20

PART NO. SM60S

APPROX WT: Frame 160 Lbs, Cover 130 Lbs

REV: A DATE: 6/23/2003 New border

REV
A

DOCUMENT APPROVED
BY: DATE:

DWN: CL DATE: 6/23/2003

CHKD: CL DATE: 6/23/2003

TOLERANCE
XX +. .1
XXX +. .06
XXXX +. .030
<+- 2 DEG

REV: DATE:

DWG #: SM60 SOLID

SCALE: N/A

SHEET: 1 OF 1