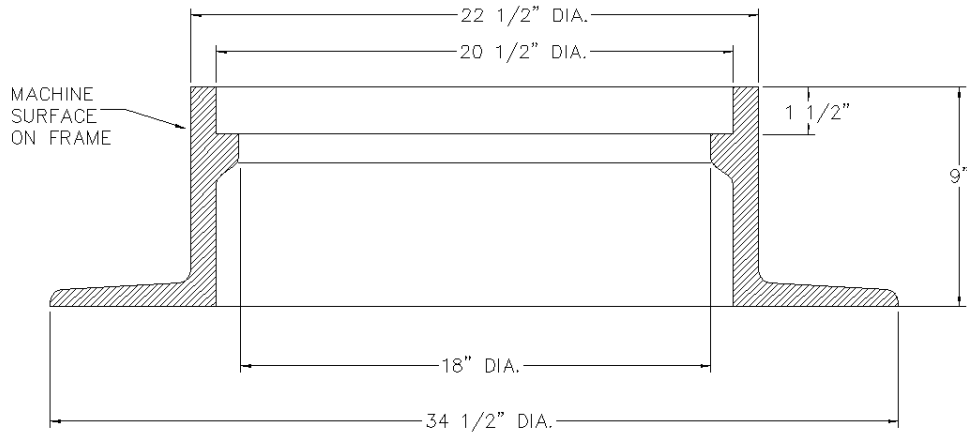


MH12A - 18" x 4" FRAME - REVERSIBLE



MH12B - 18" x 9" FRAME FLANGE DOWN

NOTES:

OLYMPIC FOUNDRY INC.

18" MANHOLE RINGS

MATL: Cast Iron ASTM A48 CL30

RATING: H-20

PART NO. MH12A MH12B

APPROX WT: 122 Lbs

REV: A DATE: 6/23/2003 New border

REV
A

DOCUMENT APPROVED
BY: DATE:

DWN: CL DATE: 6/23/2005

CHKD: CL DATE: 6/23/2005

TOLERANCE
XX +/- .1
XXX +/- .06
XXXX +/- .030
<+ 2 DEG

REV: A DATE: 5/21/2004 Revised 4" ring weight

DWG #: MH12 Rings

SCALE: N/A

SHEET: 1 OF 1