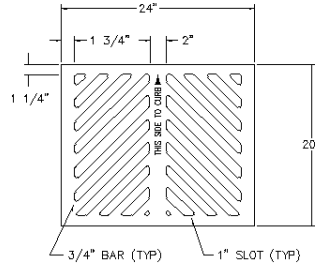
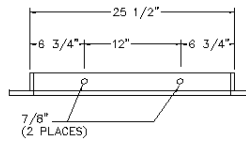
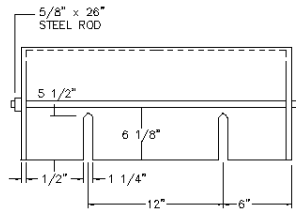


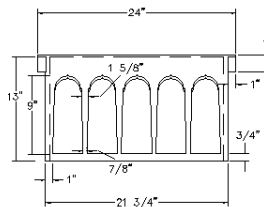
FRAME (TOP VIEW)



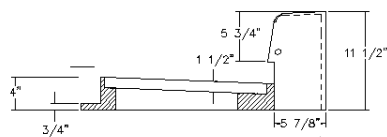
GRATE (SIDE VIEW)



HOOD

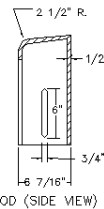


HOOD (FRONT VIEW)



GRATE (SIDE VIEW)

HOOD (SIDE VIEW)



HOOD (SIDE VIEW)

NOTES:
 *Grate: Type 1
 *Montana Dept of Highways Std.

OLYMPIC FOUNDRY INC.

CURB INLET FRAME, GRATE & HOOD

MATL: Cast Iron ASTM A48, CL30

RATING: H-20

PART NO. SM49A

APPROX WT: Frame 189 Lbs, Grate 107 Lbs, Hood 95 Lbs

REV: A DATE: 7/18/2003 New border

REV
A

DOCUMENT APPROVED
BY: DATE:

DWN: CL DATE: 7/18/2003

CHKD: CL DATE: 7/18/2003

TOLERANCE
 XX +-. .1
 XXX +-. .06
 XXXX +-. .030
 <+- 2 DEG

REV: DATE:
 DWG #: SM49A

SCALE: N/A

SHEET: 1 OF 1